

#### FEATURES

- Heritage Logo
- Slip resistant flooring
- 6 Jets
- Push Button Operated
- Pre-fitted Feet, Door, Front & End Panels
- No Tap Holes
- 5 Year Guarantee



Left hand non-whirlpool bath depicted

Logo as it appears on product: HERITAGE

#### FINISHES AVAILABLE

White WBWIW#13

#### INCLUDED COMPONENTS

Bath (Left Hand) WBWIWL13  
 Bath (Right Hand) WBWIWR13  
 Packed Weight 95kgs  
 Packed Size 1220 x 820 x 1180mm

#### PRODUCT DETAILS

Solid Construction  
 20mm box section powder coated steel frame.  
 5mm GRP construction with 8mm thickness in higher stress areas.  
 Fully Encapsulated boards under base and seat.  
 Bath supplied with front & end panels with self adjusting plinth.  
 4 adjustable feet.  
 Pop up waste included.  
 Directional jets to target specific body areas.  
 Jets positions: set of 2 either side of seat & 2 at tap end.  
 Jet Intensity can be adjusted by turning control clockwise / anti-clockwise.  
 Whirlpool includes dry run cut out feature & will not start until adequate water levels cover the jets.

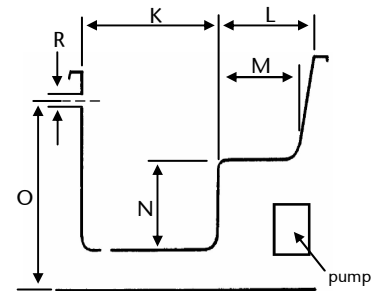
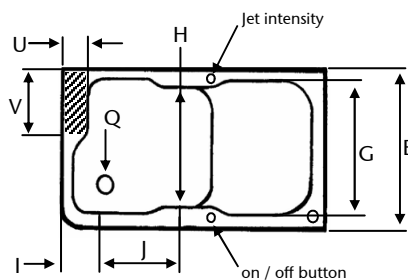
#### HERITAGE RECOMMENDS

Java Thermostatic Bath Shower Mixer TJC02  
*(not included)*

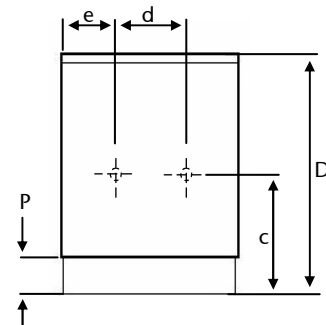
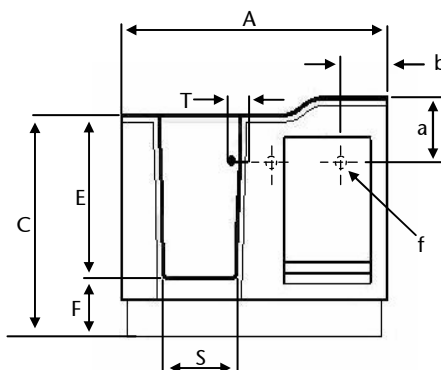
Water Capacity 220 litres  
 Water Usage Approx 150 litres  
 Pump Delivery 100-320l/min  
 Power 230V

#### DIMENSIONS

- A 1220mm
- B 660mm
- C 900-950mm
- D 970-1020mm
- E 675mm
- F 225-345mm
- G 550mm
- H 500mm
- I 165mm
- J 377mm
- K 640mm
- L 460mm
- M 390mm
- N 380mm
- O 775mm
- P 136mm
- Q 52mm
- R 46mm
- S 315mm
- T 140mm
- U 120mm
- V 290mm
- a 320mm
- b 245mm
- c 630mm
- d 280mm
- e 210mm
- f 53mm diameter



Ensure lever taps can be fully operated in the desired location before drilling holes in the bath



= Recommended tap zone